

Технические характеристики на аксессуары для аппаратов высокого давления DYNAJET

По вопросам продаж и поддержки обращайтесь:

Архангельск (8182)63-90-72
Брянск (4832)59-03-52
Вологда (8172)26-41-59
Иваново (4932)77-34-06
Калининград (4012)72-03-81
Киров (8332)68-02-04
Курск (4712)77-13-04
Москва (495)268-04-70
Нижний Новгород (831)429-08-12
Орел (4862)44-53-42
Пермь (342)205-81-47
Самара (846)206-03-16
Смоленск (4812)29-41-54
Тверь (4822)63-31-35
Тюмень (3452)66-21-18
Челябинск (351)202-03-61

Астана +7(7172)727-132
Владивосток (423)249-28-31
Воронеж (473)204-51-73
Ижевск (3412)26-03-58
Калуга (4842)92-23-67
Краснодар (861)203-40-90
Липецк (4742)52-20-81
Мурманск (8152)59-64-93
Новокузнецк (3843)20-46-81
Оренбург (3532)37-68-04
Ростов-на-Дону (863)308-18-15
Санкт-Петербург (812)309-46-40
Сочи (862)225-72-31
Томск (3822)98-41-53
Ульяновск (8422)24-23-59
Череповец (8202)49-02-64

Белгород (4722)40-23-64
Волгоград (844)278-03-48
Екатеринбург (343)384-55-89
Казань (843)206-01-48
Кемерово (3842)65-04-62
Красноярск (391)204-63-61
Магнитогорск (3519)55-03-13
Набережные Челны (8552)20-53-41
Новосибирск (383)227-86-73
Пенза (8412)22-31-16
Рязань (4912)46-61-64
Саратов (845)249-38-78
Ставрополь (8652)20-65-13
Тула (4872)74-02-29
Уфа (347)229-48-12
Ярославль (4852)69-52-93

Эл. почта: dfn@nt-rt.ru | | Сайт: <http://dynajet.nt-rt.ru>

Accessories up to 350 bar

DYNAJET original accessories meet high quality standards and are perfectly attuned to numerous applications. They specifically optimise work efficiency and cleaning depth in line with their area of deployment. In addition to accessory

sets, hoses, lances, guns and nozzles, DYNAJET also offers special accessories for applications such as water-sandblasting, or cleaning floors, roofs, walls, pipes or heat exchangers.



Abbreviations used

DN: Diameter (mm)

PN: Max. operating pressure (bar/PSI)

IT: Internal thread

ET: External thread

Art. no.: Article number

Accessory sets

Rotating nozzle system

Set consisting of spray lance, coupling and rotating nozzle.

Water-jetting system	Art. no.
150me	460 043
280me + 350th + 350sh	459 340
350me + 350mg + 350mg Plus + 350md	459 342



WSS 500 water-sandblasting system

Set consisting of spray lance, coupling, spray head incl. nozzle, and suction hose with suction pipe.

Water-jetting system	Art. no.
150me	460 044
280me + 350th + 350sh	459 346
350me + 350mg + 350mg Plus + 350md	459 348



WSS 1000 water-sandblasting system

Set consisting of spray lance, coupling, spray head incl. nozzle set, and suction hose with suction pipe.

Water-jetting system	Art. no.
280me + 350th + 350sh	459 347
350me + 350mg + 350mg Plus + 350md	459 349



Hose lines and accessories

Extension hoses

DN 8 hoses for up to 150° C with connections via rapid-release couplings 2x M22 x 1.5 IT.

Hose lines	Art. no.
Length: 10 m	440 607
Length: 25 m	440 606
Length: 50 m	546 790
O-ring and support ring	
O-ring for rapid-release coupling	471 538
Support ring for rapid-release coupling	434 458



Hose connector

Hose connector	Art. no.
As a double nipple for coupling two high-pressure hoses. Connections: 2x M22 x 1.5 ET.	427 518



Swivel joint

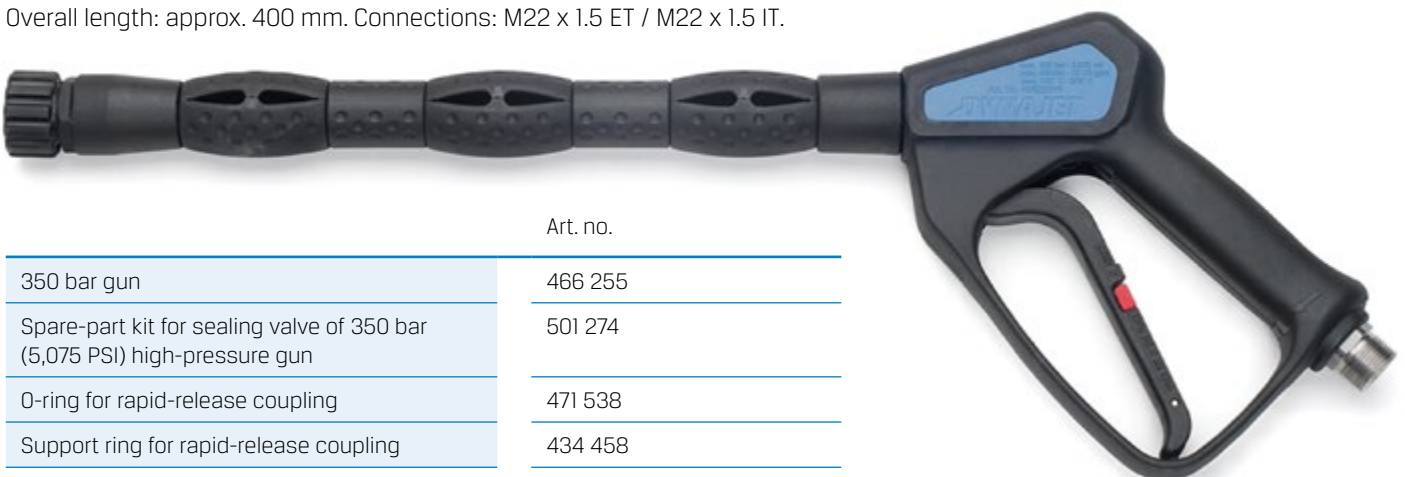
Swivel joint	Art. no.
Deployed directly on the gun inlet between the high-pressure hose and the gun to prevent the hose from twisting. Connections: M22 x 1.5 ET / M22 x 1.5 IT.	446 920



Guns and accessories

350 bar high-pressure gun

With servo valve for minimised trigger force. Safety catch to lock the trigger in place. Fully insulated, with stainless steel internal parts. For hot water up to 150 °C. Overall length: approx. 400 mm. Connections: M22 x 1.5 ET / M22 x 1.5 IT.



	Art. no.
350 bar gun	466 255
Spare-part kit for sealing valve of 350 bar (5,075 PSI) high-pressure gun	501 274
O-ring for rapid-release coupling	471 538
Support ring for rapid-release coupling	434 458

Handgrip

Art. no.

Side handgrip for 350 bar (5,075 PSI) high-pressure gun; steplessly adjustable. No tool required for retrofitting.

446 916



Coupling

Art. no.

Between gun and extension lance. Connections: M22 x 1.5 / 1/4" IT. Complete with O-ring.

427 197

Replacement O-ring

436 797



Extension lances

Art. no.

Length: 350 mm; 1/4" ET / 1/4" ET

427 179

Length: 800 mm; 1/4" ET / 1/4" ET

427 584



For safety reasons, a spray lance measuring 350 mm or more must always be chosen so that, in combination with the high-pressure gun and nozzle carrier, an overall length of approx. 800 mm is reached.

Nozzle carriers

Art. no.

For shape A and B nozzles. Connection: 1/4" IT, directly on to the extension lance.

495 294

For shape C and D plug-in nozzles. Connection: 1/4" IT. Complete with O-ring for direct connection to the extension lance.

431 516

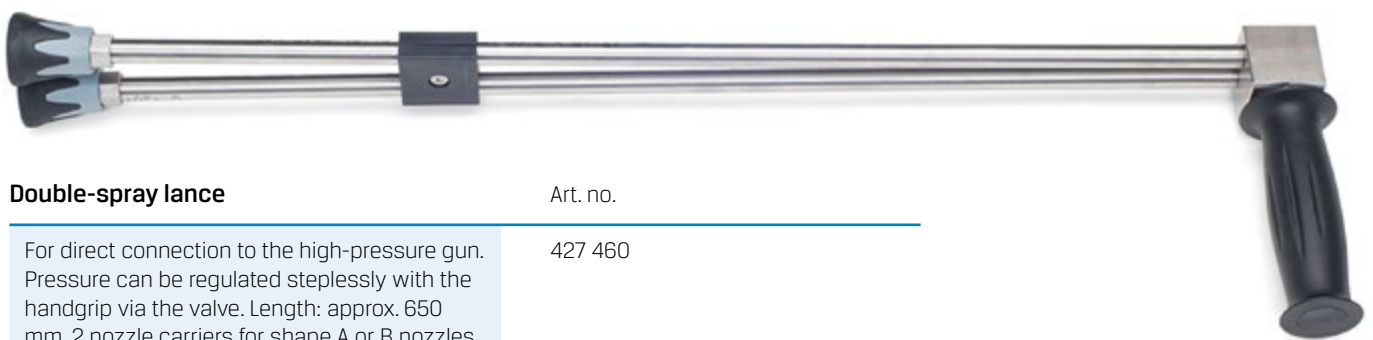
O-ring and support ring

O-ring for shape C and D plug-in nozzle carrier

484 295

Support ring for shape C and D plug-in nozzles

489 307



Double-spray lance

Art. no.

For direct connection to the high-pressure gun. Pressure can be regulated steplessly with the handgrip via the valve. Length: approx. 650 mm. 2 nozzle carriers for shape A or B nozzles. Equipped with a shape B low-pressure nozzle (506 422). Connection: M22 x 1.5 ET. High-pressure nozzle not included.

427 460

Spare-part kit for valve

505 583

High-pressure nozzles

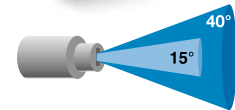
Round-jet nozzles (shape A)

Water-jetting system	Designation	Art. no.
150me	015	427 333
280me + 350th	0035	414 019
350me + 350mg + 350md	005	427 136



Flat-jet nozzles (shape B)

Water-jetting system	Designation	Art. no.
15° jet angle (standard)		
150me	1515	425 853
280me + 350th	15034	414 016
350me + 350mg + 350md	1505	427 144
40° jet angle		
150me	4015	427 137
280me + 350th	40034	427 138
350me + 350mg + 350md	4005	427 141



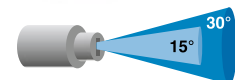
Round-jet nozzles, plug-in type (shape C)

Water-jetting system	Designation	Art. no.
280me + 350th	1.1	438 670
350me + 350mg + 350md	1.3	438 673



Flat-jet nozzles, plug-in type (shape D)

Water-jetting system	Designation	Art. no.
15° jet angle (standard)		
280me + 350th	1.3	498 402
350me + 350mg + 350md	1.6	436 922
30° jet angle		
280me + 350th	1.3	447 887
350me + 350mg + 350md	1.6	438 679



Rotating nozzles (shape F)

With special, heat-resistant ceramic for rotor and seat, deployable up to 150 °C.
Anti-impact protective plastic cover. Connection: 1/4" IT.

Water-jetting system	Designation	Art. no.
150me	150	414 024
280me + 350th	035	414 023
350me + 350mg + 350md	050	427 498



Please note: Always start rotor nozzles downwards!
Otherwise damage may be caused to the rotor.



Rotating nozzles with manual speed adjustment (shape F)

Enable the strength of the jet to be adapted for sensitive or varying surfaces.
Deployable up to 150 °C. Connection: 1/4" IT.

Water-jetting system	Designation	Art. no.
280me + 350th	035	414 025
350me + 350mg + 350md	050	427 589



Repair kits

For shape F rotating nozzles. Contain replacement nozzles and ceramic seat.
Specifically designed for the high water temperatures of DYNAJET water-jetting systems.

Nozzle type	Designation	Art. no.
Nozzle 414 024	150	414 028
Nozzle 414 023	035	414 027
Nozzle 427 498	050	427 499

With speed adjustment	Designation	Art. no.
Nozzle 414 025	035	414 029
Nozzle 427 589	050	431 485



Poly nozzles

Multi-jet nozzles, ideal for removing chewing gum. Brass housing with integrated metal filter. Deployable up to max. 90 °C. Connection: 1/4" IT.

Water-jetting system	Designation	Art. no.
280me + 350th	035	461 181
350me + 350mg + 350md	050	461 182



Water-sandblasting systems and accessories

WSS 500 water-sandblasting system

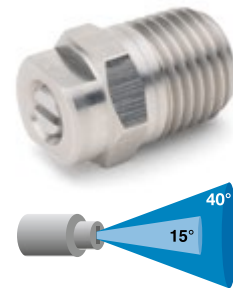
Sandblasting head with boron carbide focus nozzle. Lateral sand feed. Accommodates shape B nozzles. 15° jet angle. Connection: 1/4" IT.

	Art. no.
WSS 500 (shape B nozzle not included)	418 177
Replacement boron carbide focus nozzle	430 185



High-pressure nozzles (shape B) for WSS 500 sandblasting head

Water-jetting system	Designation	Art. no.
150me	1515	425 853
280me + 350th	15034	414 016
350me + 350mg + 350md	1505	427 144



Blasting-abrasive suction pipe for WSS 500	Art. no.
Offering stepless quantity adjustment of the blasting medium	414 036

WSS 1000 water-sandblasting system

Professional sandblasting head for continuous deployment. Circular arrangement of the high-pressure nozzles. Central sand feed. Tungsten carbide focus nozzle. Connection: 9/16" - 18 UNF IT. Accommodates 3 high-pressure nozzles (shape E).

	Art. no.
WSS 1000 (shape E nozzle inserts not included)	435 111
Replacement tungsten carbide focus nozzle for WSS 1000	450 815



Adapter nipple for WSS 1000

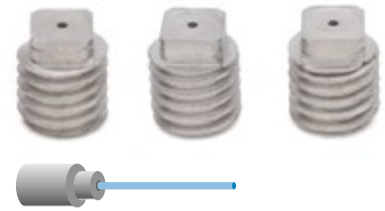
Adapter nipple for WSS 1000	Art. no.
Connects the WSS 1000 to spray lances with 1/4" ET, inlet: 1/4" IT, outlet: 9/16" - UNF ET	448 204



Nozzle sets (shape E) for WSS 1000 water-sandblasting system

High-pressure nozzle sets for WSS 1000 sandblasting head.
Each set consists of 3 nozzles

Water-jetting system	Designation	Art. no.
280me + 350th	0.6	447 560
350me + 350mg + 350md	0.7	447 561



Special tool

	Art. no.
For replacing shape E nozzles for WSS 1000	438 684



Blasting-abrasive suction pipe for WSS 1000

	Art. no.
Offering stepless quantity adjustment of the blasting medium	435 113

Blasting-abrasive suction hose for WSS 500 and WSS 1000

	Art. no.
With spiral inlay; length: approx. 12 m	414 037
Clamp for blasting-abrasive suction hose. 2 required (1 on the blasting head and 1 on the suction pipe)	001 422



Floor-cleaning system and accessories

DYNAJET DFS 350 floor-cleaning system

With 350 bar (5,075 PSI), perfect for effective cleaning of surfaces such as floors, roads or cycle paths. Fully equipped with high-pressure gun. Hose connection: M22 x 1.5 ET. Nozzles, O-ring and support ring not included.

- **Efficient and powerful:** Uses hot water up to 120 °C. Nozzle carriers to accommodate two shape D high-performance nozzles for maximum results.
- **Mobile and robust:** Four steerable, heat- and oil-resistant wheels for extra-smooth motion without jamming. Flexible positioning of hot-water high-pressure hose. Folding handle for easy transportation and space-saving storage.
- **Superior and practical:** In stainless steel with welded stainless steel nozzle rotor. Splash guard to prevent the surrounding area from becoming dirty.

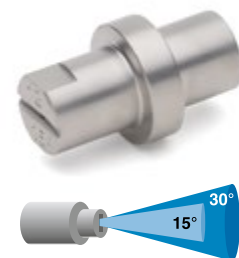


	Data	Art. no.
Working pressure	Up to 350 bar	494 302
Flow rate	Max. 45 l/min	
Temperature	Max. 120° C	
Diameter	520 mm	
Wheels	60 mm	
Connection	M22 x 1.5 ET	
Nozzles	2x shape D	
Replacement high-pressure swivel		501 578
Replacement gun		444 084
Union nut for nozzle		525 047

Nozzles (shape D) for DFS 350

Two identical nozzles are required for the DFS 350.

Water-jetting system	Designation	Art. no.
15° jet angle		
280me + 350th	0.95	498 406
350me + 350mg + 350md	1.10	498 401
30° jet angle (DYNAJET recommendation)		
280me + 350th	0.95	498 393
350me + 350mg + 350md	1.10	498 394
O-ring and support ring		
O-ring for shape C and D plug-in nozzle carrier		484 295
Support ring for shape C and D plug-in nozzles		489 307



Roof cleaning

DYNAJET DRS-W roof-cleaning system

Suitable for corrugated roofs. Fully equipped with brush, manometer, 2/2-way ball valve for high-pressure on/off, wheels (distance adjustable), and nozzle bar for 2 identical shape D nozzles. Connection: M22 x 1.5 ET. 400 mm in diameter. Nozzles, O-ring and support ring not included.



Art. no.

DRS-W	426 846
Replacement high-pressure swivel	418 362

DYNAJET DRS roof-cleaning system

Ideal for cleaning concrete-tile und clay-tile roofs. Fully equipped with brush, manometer, 2/2-way ball valve for high-pressure on/off, wheels (distance and height adjustable to roof profile), and nozzle bar for 2 identical shape D nozzles. Connection: M22 x 1.5 ET. 500 mm in diameter. Nozzles, O-ring and support ring not included.



Art. no.

DRS	546 817
Replacement high-pressure swivel	546 587

Nozzle selection (shape D) for DRS-W and DRS

Two identical nozzles are required for both the DRS-W and DRS.

Water-jetting system	Designation	Art. no.
15° jet angle		
280me + 350th	0.95	498 406
350me + 350mg + 350md	1.10	498 401
30° jet angle		
280me + 350th	0.95	498 393
350me + 350mg + 350md	1.10	498 394
O-ring and support ring		
O-ring for shape C and D plug-in nozzle carrier		484 295
Support ring for shape C and D plug-in nozzles		489 307



Wall cleaning

DYNAJET DWS 350 wall-cleaning system

Ideal for hand-guided work, cleaning walls, ceilings and small surfaces. Excellent results due to the unvarying distance between the nozzle rotor and object. Hose connection: M22 x 1.5 ET.

Fully equipped with spray-gun handle, stainless steel splash guard with brush and side handgrip, double walls with 2" vacuum connection, and nozzle rotor for accommodating 2 identical shape A or B nozzles. Nozzles not included.

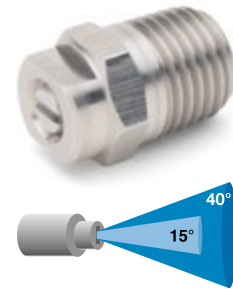


	Art. no.
DWS 350/3D (diameter: 300 mm)	443 314
Replacement high-pressure swivel	443 633
Replacement gun	444 084

Nozzle selection (shape B) for DWS 350

Two identical nozzles are required for the DFS 350.

Water-jetting system	Designation	Art. no.
280me + 350th	1502	414 018
350me + 350mg + 350md	15028	427 823



Pipe, drain and heat exchanger cleaning

F 500 foot valve

To switch the high pressure on and off easily when cleaning pipes. Stainless steel casing. Inlet: M22 x 1.5 ET, outlet: M22 x 1.5 IT; max. 60 l/min (15.90 USgal/min).

Connecting nipple to connect foot valve and pipe-cleaning hose. Connections: M22 x 1.5 ET / 1/4" IT.

Art. no.

503 865

427 197



Pipe-cleaning hoses

Suitable for DYNAJET models up to 350 bar (5,075 PSI). Connect directly to the F 500 foot valve with the connecting nipple.

	Art. no.
Length: 15 m; connection: 1/4" ET / 1/4" ET	414 040
Length: 25 m; connection: 1/4" ET / 1/4" ET	414 041
Length: 50 m; connection: 1/4" ET / 1/4" ET	414 042



Pipe-cleaning nozzles

For direct connection to pipe-cleaning hoses.

Standard nozzles

For all areas of application. Drilled as pulling nozzles for autonomous feed.

Water-jetting system	Pipe diameter	Art. no.
150me	> 30 mm	414 046
280me + 350th	> 30 mm	434 659
350me + 350mg + 350md	> 30 mm	414 045



Rotating nozzles

For complete, all-round cleaning. Not available as pulling nozzles.

Water-jetting system	Pipe diameter	Art. no.
280me + 350th	30-100 mm	434 660
350me + 350mg + 350md	30-100 mm	414 049
2x 350me or 2x 350mg or 2x 350md	30-100 mm	459 816



Pocking nozzles

For cleaning completely blocked pipes. Drilled as pulling nozzles.

Water-jetting system	Pipe diameter	Art. no.
150me	> 40 mm	414 048
280me + 350th	> 40 mm	434 661
350me + 350mg + 350md	> 40 mm	414 047



Tank and container cleaning

DYNAJET TWS 200 tank-cleaning system

Rotating high-pressure nozzle head for interior cleaning of tanks, drums, barrels and containers. Stainless steel. Head diameter: 40 mm. Shaft length: 700 mm. Overall length: approx. 1,050 mm. Weight: approx. 25 kg. Inlet: M22 x 1.5 ET. Fully equipped with safety valve on the inlet and 2 high-pressure nozzles. Designed for a working pressure of 200 bar (2,900 PSI) and 21 l/min (5.56 USgal/min). Various drive motors can be selected for the nozzle head:

	Art. no.
Electric motor	446 917
Pneumatic motor	446 918
Water motor, without external energy supply	446 919



DYNAJET TWS 400 tank-cleaning system

For interior cleaning of tanks, drums, barrels and containers. Fully equipped with rotor and 2 shape A nozzles. Designed for 350 bar (5,075 PSI) and 21 l/min (5.56 USgal/min). Connection for hose: M22 x 1.5 ET. Driven by nozzle reaction force without any external drive. Rotor speed can be adapted via the position of the nozzles on the rotor.

	Art. no.
Aluminium housing	459 469
Stainless steel housing	495 800



Other accessories up to 350 bar

Chemical injector

For injection of cleaning agents by vacuum. Connection straight after unloader valve. Inlet: M22 x 1.5 IT, outlet: M22 x 1.5 ET. Adjustable dosage. Complete with plastic hose. Max. 350 bar (5,075 PSI). Only in combination with double-spray lance (art. no. 427 460)

Art. no.

445 582



Couplings / rapid-release couplings

Connection	Picture	Art. no.
M22 x 1.5 ET, 1/4" IT	1	427 197
M22 x 1.5 IT, 1/4" IT	2	427 587
M22 x 1.5 IT, 1/4" ET	3	427 586
M22 x 1.5 IT, 3/8" ET	4	427 585
M22 x 1.5 IT, 3/8" IT	5	427 534
M22 x 1.5 ET, 3/8" IT	6	427 425
M22 x 1.5 ET, 1/4" ET	7	428 016
M22 x 1.5 ET, 3/8" ET	8	428 017
O-ring for rapid-release coupling	(1; 6-8)	436 797
O-ring for rapid-release coupling M22 x 1.5	(2-5)	471 538
Support ring for rapid-release coupling M22 x 1.5	(2-5)	434 458



Hose drum

	Art. no.
Loose drum for flexible installation. Includes hand crank, high-pressure swivel, mounting plate and locking mechanism. Inlet: M22 x 1.5 ET, outlet: 3/8" BSP ET. For max. 75 m high-pressure hose (DN 8).	547 586



Hoses for hose drum

Suitable for hose drum (art. no. 459 309) or 350th trailer. DN 8.
Connections: 3/8" BSP 90° directly on the drum, M22 x 1.5 IT.

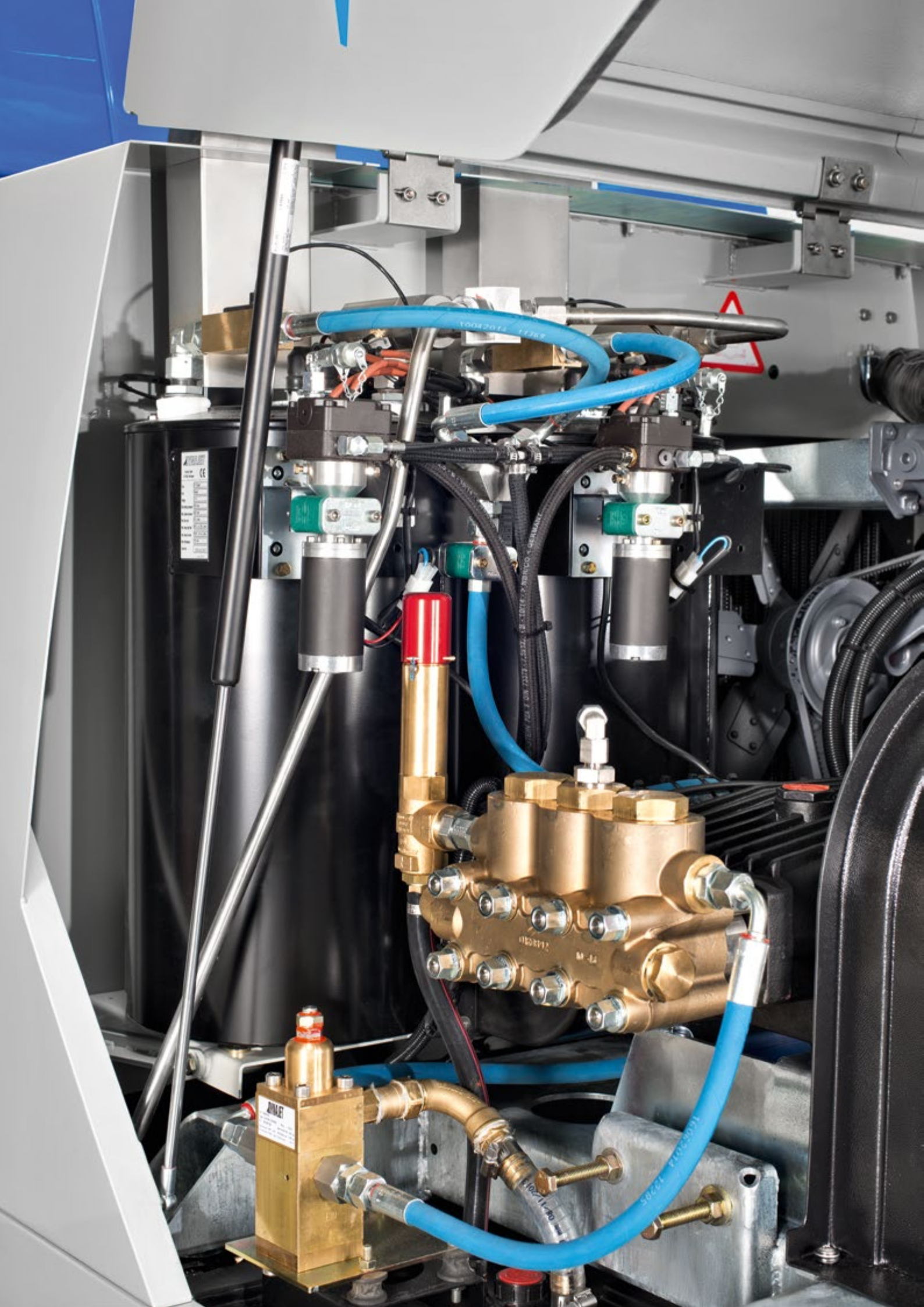
	Art no.
Length: 25 m	440 603
Length: 50 m	440 604
Length: 75 m	440 605



Distributor

	Art. no.
For parallel operation of one DYNAJET water-jetting system by two consumers. 1x inlet M22 x 1.5 ET, 2x outlet M22 x 1.5 ET. Can also be used as a collecting component for two pumps to one consumer (only possible with DYNAJET water-jetting systems equipped with an unloader valve without hose-pressure drop-down system).	457 606







ДУМА

Water-jetting systems and accessories up to 500 bar (7,250 PSI)

Accessories up to 500 bar

DYNAJET original accessories meet high quality standards and are perfectly attuned to numerous applications. They specifically optimise work efficiency and cleaning depth in line with their area of deployment. In addition to accessory

sets, hoses, lances, guns and nozzles, DYNAJET also offers special accessories for applications such as water-sandblasting, or cleaning surfaces, pipes or heat exchangers.



Abbreviations used

DN: Diameter (mm)

PN: Max. operating pressure (bar/PSI)

IT: Internal thread

ET: External thread

Art. no.: Article number

Accessory sets

Rotating nozzle system

Set consisting of spray lance, coupling and rotating nozzle.

Water-jetting system	Art. no.
500me + 500mg + 500md	459 345
500me-30 + 500th	459 344



WSS 1000 water-sandblasting system

Set consisting of spray lance, coupling, spray head incl. nozzle set, and suction hose with suction pipe.

Water-jetting system	Art. no.
500me + 500mg + 500md	459 353
500me-30 + 500th	459 351



Hose lines and accessories

Extension hoses

DN 10 hoses for up to 120 °C with connections via rapid-release couplings 2x M24 x 1.5 IT.

Hose lines	Art. no.
Length: 10 m	503 954
Length: 25 m	503 955
Length: 50 m	524 382
O-ring for rapid-release coupling	546 637
Support ring for rapid-release coupling	546 638



Hose connector

Hose connector	Art. no.
For coupling two high-pressure hoses. Connections: 2x M24 x 1.5 ET.	546 804
Replacement O-ring (20 x 2.5)	018 893



Guns and accessories

600 bar high-pressure gun

Stainless steel gun with servo valve for minimised trigger force. Side handgrip that can be secured in various positions. Integrated swivel joint. Fully insulated.

For hot water up to 150 °C. Overall length: approx. 630 mm. Max. 60 l/min (15.90 USgal/min). Connections: M24 x 1.5 ET / M24 x 1.5 IT.



	Art. no.
600 bar gun	546 527
Spare-part kit	546 616
O-ring for rapid-release coupling	546 637
Support ring for rapid-release coupling	546 638
Shoulder support. Mandatory for reaction forces greater than 150 newtons.	447 592

Coupling

	Art. no.
Between gun and extension lance. Connections: M24 x 1.5 ET, 3/8" IT.	502 977
Replacement O-ring (20 x 2.5)	018 893

**3/8" extension lances**

	Art. no.
Length: 250 mm; 3/8" ET / 3/8" ET	502 970
Length: 800 mm; 3/8" ET / 3/8" ET	502 971
Length: 1,500 mm; 3/8" ET / 3/8" ET	502 972
Length: 2,000 mm; 3/8" ET / 3/8" ET	502 973



For safety reasons, a spray lance measuring 250 mm or more must always be chosen so that, in combination with the 600 bar high-pressure gun, an overall length of approx. 800 mm is reached.

Nozzle carrier for 3/8" extension lances

	Art. no.
For shape A and B nozzles. Connection: 3/8" IT, directly on to the extension lance.	502 974
For shape C and D plug-in nozzles. Connection: 3/8" IT, directly on to the extension lance.	502 952
O-ring for shape C and D plug-in nozzles	484 295
Support ring for shape C and D plug-in nozzles	489 307
For shape F rotor nozzles up to 500 bar. Connection: 3/8" IT, directly on to the extension lance. With 1/4" ET outlet.	503 011



High-pressure nozzles

Round-jet nozzles, plug-in type (shape C)

Water-jetting system	Designation	Art. no.
500me + 500mg + 500md	1.0	438 669
500th + 500me-30	1.4	438 675



Flat-jet nozzles, plug-in type (shape D)

Water-jetting system	Designation	Art. no.
15° jet angle (standard)		
500me + 500mg + 500md	1.2	431 316
500th + 500me-30	1.6	436 922
30° jet angle		
500me + 500mg + 500md	1.2	438 676
500th + 500me-30	1.6	438 679



Rotating nozzles (shape F)

Superior stainless steel finish. Connection: 1/4" IT. An adapter is required for connection to 3/8" spray lances!

Water-jetting system	Designation	Art. no.
500me + 500mg + 500md	030	445 940
500th + 500me-30	055	427 149
Adapter and nozzle pipe		
Adapter with 1/4" ET outlet. Connection: 3/8" IT, directly on to the extension lance.		503 011
Complete nozzle pipe; 300 mm; M24 ET - 1/4 IT		482 900



i **Please note:** Always start rotor nozzles downwards! Otherwise damage may be caused to the rotor.

Repair kits

For shape F rotating nozzles. Contain replacement nozzles and ceramic seat. Specifically designed for the high water temperatures of DYNAJET water-jetting systems.

Nozzle type	Designation	Art. no.
Nozzle 445 940	030	445 941
Nozzle 466 607	050	466 666
Nozzle 427 149	055	431 486
O-ring for all nozzle sizes		460 442



Water-sandblasting systems and accessories

WSS 1000 water-sandblasting system

Professional sandblasting head for continuous deployment. Circular arrangement of the high-pressure nozzles. Central sand feed. Tungsten carbide focus nozzle. Connection: 9/16" - 18 UNF IT. Accommodates 3 high-pressure nozzles (shape E).

	Art. no.
WSS 1000 (shape E nozzle inserts not included)	435 111
Replacement tungsten carbide focus nozzle for WSS 1000	450 815



Adapter nipple for WSS 1000

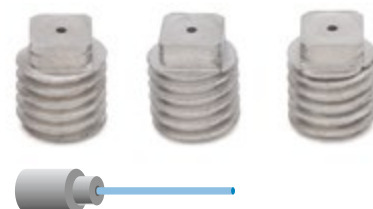
	Art. no.
Connects the WSS 1000 to 3/8" spray lances. Inlet: 3/8" IT, outlet: 9/16" - 18 UNF ET.	506 527



Nozzle sets (shape E) for WSS 1000 water-sandblasting system

High-pressure nozzle sets for WSS 1000 sandblasting head. Each set consists of 3 nozzles.

Water-jetting system	Designation	Art. no.
500me + 500mg + 500md	0.55	453 077
500th + 500me-30	0.8	447 559



Special tool

	Art. no.
For replacing shape E nozzles for WSS 1000	438 684



Water-jetting systems and accessories up to 500 bar (7,250 PSI)



Blasting-abrasive suction pipe for WSS 1000 Art. no.

Offering stepless quantity adjustment of the blasting medium	435 113
--	---------

Blasting-abrasive suction hose for WSS 1000 Art. no.

With spiral inlay; length: approx. 12 m	414 037
Clamp for blasting-abrasive suction hose. 2 required (1 on the blasting head and 1 on the suction pipe).	001 422



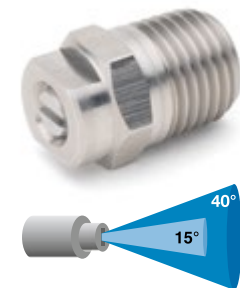
Double-spray lance Art. no.

For direct connection to the high-pressure gun. Pressure can be regulated steplessly with the handgrip via the valve. Length: approx. 650 mm. 2 nozzle carriers for shape A or B nozzles. Equipped with a shape B low-pressure nozzle (506 422). Connection: M24 x 1.5 ET. High-pressure nozzle not included.	533 159
Spare-part kit for valve	505 583

High-pressure nozzles (shape B) with 15° jet angle for double-spray lance

One nozzle is required.

Water-jetting system	Designation	Art. no.
500me + 500mg + 500md	1503	449 011
500th + 500me-30	15055	433 537



Floor-cleaning system and accessories

DYNAJET DFS 500 floor-cleaning system

With 500 bar, perfect for splash-free cleaning of surfaces such as floors, roads or cycle paths. Fully equipped with high-pressure gun. Nozzles, O-ring and support ring not included.

- **Efficient and powerful:** Uses hot water up to 120 °C. 90° vacuum connection. Nozzle carriers to accommodate two shape D high-performance nozzles for maximum results.
- **Mobile and robust:** Four steerable, heat- and oil-resistant wheels for extra-smooth motion without jamming. Double walls. Height-adjustable for simple adaptation to surfaces. Folding handle for easy transportation and space-saving storage.
- **Superior and practical:** In stainless steel with welded stainless steel rotor. Splash guard to prevent the surrounding area from becoming dirty.

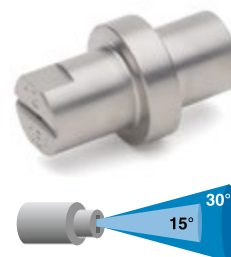


DFS 500	Data	Art. no.
Working pressure	Up to 500 bar	506 448
Flow rate	Max. 45 l/min	
Temperature	Max. 120 °C	
Diameter	520 mm	
Wheels	60 mm	
Connection	M24 x 1.5 ET	
Nozzles	2x shape D	
Replacement high-pressure swivel		501 579
Replacement gun		546 856

Nozzles (shape D) for DFS 500

Two identical nozzles are required.

Water-jetting system	Designation	Art. no.
15° jet angle		
500me + 500mg + 500md	0.85	498 398
500th + 500me-30	1.2	431 316
30° jet angle (DYNAJET recommendation)		
500me + 500mg + 500md	0.85	498 391
500th + 500me-30	1.2	438 676
O-ring and support ring		
O-ring for shape C and D plug-in nozzle carrier		484 295
Support ring for shape C and D plug-in nozzles		489 307



Pipe-cleaning accessories

F 500 foot valve

To switch the high pressure on and off easily when cleaning pipes. Stainless steel casing. Inlet: M24 x 1.5 ET, outlet: M24 x 1.5 ET.

Art. no.

532 373



Hose lines, coupling and connecting nipple

DN 10. Connection: 2x M24 x 1.5 IT.

Art. no.

Length: 10 m	503 954
Length: 25 m	503 955
Length: 50 m	524 382
Coupling as junction between high-pressure hose and connecting nipple. Connections: M24 x 1.5 ET, 3/8" ET.	546 802
Connecting nipple to connect coupling and pipe-cleaning nozzle. Inlet: 3/8" IT, outlet: 1/4" ET.	503 011



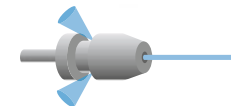
Pipe-cleaning nozzles

For direct connection to connecting nipple. Art. no. 503 011.

Standard nozzles

For all areas of application. Drilled as pulling nozzles for autonomous feed.

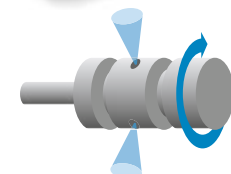
Water-jetting system	Pipe diameter	Art. no.
500me + 500mg + 500md	> 30 mm	467 183
500th + 500me-30	> 30 mm	427 074



Rotating nozzles

For complete, all-round cleaning. Not available as pulling nozzles.

Water-jetting system	Pipe diameter	Art. no.
500me + 500mg + 500md	30-100 mm	485 667
500th + 500me-30	30-100 mm	427 073



Heat exchanger cleaning accessories

Coupling

Art. no.

Between F 500 foot valve (art. no. 532 373) and connecting nipple. Inlet: M24 x 1.5 IT, outlet: 3/8" IT.

546 798



Connecting nipple

Art. no.

Between coupling and flexible lance. Inlet: 3/8" ET, outlet: M24 x 1.5 DKO ET.

445 117



Flexible lances

Hose connection inlet: M24 x 1.5 DKO IT. 10 m in length with marking before end of hose.

External diameter and connection thread	Type	Art. no.
10.5 mm; M7 ET	(4/2)	505 571
13 mm; 1/8" ET	(5/2)	505 574
16 mm; 1/4" ET	(6/2)	505 576



Pipe-cleaning nozzles, rigid

Drilled as pulling nozzles with front jet. Suitable for DYNAJET 500me-30 and 500th.

External diameter and connection thread	Type	Art. no.
10.5 mm; M7 IT	(4/2)	505 577
12 mm; 1/8" IT	(5/2)	505 578
16 mm; 1/4" IT	(6/2)	505 579



Pipe-cleaning nozzles, rotating

Drilled as pulling nozzles with front jet. Suitable for DYNAJET 500me-30 and 500th.

External diameter and connection thread	Type	Art. no.
10.5 mm; M7 IT	(4/2)	505 580
13 mm; 1/8" IT	(5/2)	505 581
16 mm; 1/4" IT	(6/2)	505 582



Other accessories up to 500 bar

600 bar high-pressure gun, short

Art. no.

In stainless steel with servo valve for simple and fatigue-proof operation. Inlet: M24 x 1.5 ET, outlet: 3/8" IT.

546 856

Spare-part kit for high-pressure gun

502 434



Couplings / rapid-release couplings

Connection	Picture	Art.-Nr.
M24 x 1.5 ET, 3/8" IT	1	546 801
M24 x 1.5 IT, 3/8" IT	2	546 798
M24 x 1.5 IT, 3/8" ET	3	546 797
M24 x 1.5 ET, 3/8" ET	4	546 802
O-ring for rapid-release coupling M24 x 1.5		546 637
Support ring for rapid-release coupling M24 x 1.5		502 980
O-ring for M24 x 1.5 ET, 20 x 2.5 (for 1 and 4)		546 641



Hose drum

Art. no.

Loose drum for flexible installation. Includes hand crank, high-pressure swivel, mounting plate and locking mechanism. Inlet: M24 x 1.5 ET, outlet: M20 x 1.5 ET. Suitable for max. 50m high-pressure hose (DN 10).

532 960

Hose line for hose drum or DYNAJET 500th trailer. DN 10. Length: 50 m.

546 794



Distributor

Art. no.

For parallel operation of one DYNAJET water-jetting system by two consumers. 1x inlet M24 x 1.5 ET, 2x outlet M24 x 1.5 ET. Can also be used as a collecting component for two pumps to one consumer (only possible with DYNAJET water-jetting systems equipped with an unloader valve without hose-pressure drop-down system).

523 638





DYNAJET
435111W

Water-jetting systems and accessories up to 1,000 bar (14,500 PSI)

Accessories up to 1,000 bar

DYNAJET original accessories meet high quality standards and are perfectly attuned to numerous applications. They specifically optimise work efficiency and cleaning depth in line with their area of deployment. In addition to accessory

sets, hoses, lances, guns and nozzles, DYNAJET also offers special accessories for applications such as water-sandblasting, or cleaning floors, containers, pipes or heat exchangers.



Abbreviations used

DN: Diameter (mm)

PN: Max. operating pressure (bar/PSI)

IT: Internal thread

ET: External thread

Art. no.: Article number

Accessory sets

Rotating nozzle system

Set consisting of spray lance, coupling and rotating nozzle.

Water-jetting system	Art. no.
800me-20	530 851
800th wireless	531 125
1000me-17, 1000t	546 724



WSS 1000 water-sandblasting system

Set consisting of spray lance, coupling, spray head incl. nozzle set, and suction hose with suction pipe.

Water-jetting system	Art. no.
800me-20, 800th wireless	487 234
1000me-17, 1000t	446 723



Water-jetting systems and accessories up to 1,000 bar (14,500 PSI)

1,200 bar high-pressure gun – complete set

Stainless steel gun with servo valve for minimised holding force. Side handgrip that can be secured in various positions. Integrated swivel joint. Fully insulated and suitable for hot water up to 150 °C. Overall length: approx. 1,100 mm. Max. 60 l/min (15.90 USgal/min). Connections: M24 x 1.5 ET / M24 x 1.5 IT.



Water-jetting system

Art. no.

800me, 1000me, 800th wireless

522 605

Hose lines and accessories

Extension hoses

DN 10 for up to 100 °C, including whip check. Connection: 2x M24 x 1.5 DKO IT.

Hose lines

Art. no.

Length: 10 m

477 853

Length: 20 m

482 089

Replacement O-ring

485 381



Whip check

Prevents hose whip if the connection between the hose line and the machine separates while under pressure.

Art. no.

Variable for all hose sizes.

547 496



Hose connector

Art. no.

Double nipple for coupling two high-pressure hoses. Connections: 2x M24 x 1.5 DKO ET. PN: 1,800 bar (26,100 PSI).

437 756



Swivel joint

Art. no.

Prevents hose lines from twisting. Screwed in directly between the high-pressure gun and the high-pressure hose line. Connections: M26 x 1.5 ET ground surface seal (gun connection) and M24 x 1.5 DKO ET (hose connection). PN: 1,600 bar (23,200 PSI). Max. 95 °C.

494 275

**Distributor**

Art. no.

For parallel operation of one DYNAJET water-jetting system by two consumers. Connections: 1x inlet M24 x 1.5 DKO ET, 2x outlet M24 x 1.5 DKO ET.

533 163



Guns and accessories

1,200 bar high-pressure gun

With servo trigger and mechanical shut-off valve. Connections: inlet: M24 x 1.5 DKO ET, outlet: M26 x 1.5 IT.

Art. no.

High-pressure gun

522 604

Set of 1,200 bar O-ring/
support ring seals

539 484

Special tool for disassembly

528 283

**Shoulder support**

Art. no.

For 1,200 bar high-pressure gun to absorb reaction forces. Mandatory for reaction forces greater than 150 newtons.

519 001



Water-jetting systems and accessories up to 1,000 bar (14,500 PSI)

High-pressure gun-lances, pressure ring and pressure screw

For fixing on the high-pressure gun. External diameter: 14.3 mm.

Spanner flat on both ends: 12 mm. Internal diameter: 8 mm.

Connection thread: 9/16"-18 UNF-LH ET. PN: 1,600 bar.



Gun lances	Art. no.
Length: 350 mm	482 505
Length: 800 mm	482 515
Length: 1,200 mm	482 516
Length: 2,000 mm	482 517
Pressure ring and pressure screw	
Pressure ring for screwing together ultrahigh-pressure connections. Anti-vibration. Thread: 9/16"-18 UNF-LH IT.	474 636
Pressure screw for screwing together ultrahigh-pressure connections. Anti-vibration in combination with pressure ring. Thread: M26 x 1.5 ET.	474 635



For safety reasons, a spray lance must be chosen so that, in combination with the 1,200 bar (17,400 PSI) high-pressure gun, an overall length of at least 800 mm is reached.

Handgrip	Art. no.
For side-mounting on the high-pressure gun-lance. Can be secured in any position.	519 707



Protective grip	Art. no.
For protection on the high-pressure gun-lance	489 336



Control cable
For accessories with remote control via electronic signal.
Metal coupling and connector.

	Art. no.
25 m; loose, with coupling and connector	511 694
50 m; loose, with coupling and connector	511 696
25 m; on drum, with coupling, locking mechanism and connector	514 733
50 m; on drum, with coupling, locking mechanism and connector	514 734



Single-nozzle carrier for shape C and D nozzle inserts

To accommodate 1x shape C or D plug-in nozzle insert. Light in weight.
Consists of 1x basic body and 1x union nut, complete with O-ring and support ring.
PN: 1,500 bar (21,750 PSI). Connection: 9/16"-18 UNF-LH IT. Nozzle not included.

	Art. no.
Single-nozzle carrier	488 299
O-ring for shape C and D plug-in nozzles	484 295
Support ring for shape C and D plug-in nozzles	489 307



High-pressure nozzles

Round-jet nozzles, plug-in type (shape C)

In vacuum-hardened stainless steel. For up to 1,500 bar.

Water-jetting system	Designation	Art. no.
800me, 800th wireless	1.0	438 669
1000me, 1000t	1.1	438 670



Flat-jet nozzles, plug-in type (shape D)

In vacuum-hardened stainless steel. For up to 1,500 bar.

Water-jetting system	Designation	Art. no.
15° jet angle		
800me, 800th wireless	1.1	498 401
1000me, 1000t	1.2	431 316
30° jet angle		
800me, 800th wireless	1,2	438 676
1000me, 1000t	1.1	498 394



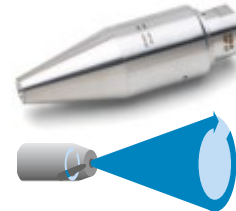


Please note: Always start rotor nozzles downwards!
Otherwise damage may be caused to the rotor.

Rotating nozzles (shape F), turbo, for up to 800 bar (11,600 PSI)

Can be mounted straight on to the spray lance. High speed without brake for rapid surface preparation. Connection: 9/16"-18 UNF-LH IT. Max. 80 °C.

Water-jetting system	Designation	Art. no.
30° jet angle		
800me	1.05	528 432
800th, 800th wireless	1.10	435 110



Rotating nozzle (shape F), turbo, for up to 1,500 bar (21,750 PSI)

This all-purpose nozzle with an extremely hard spot-jet that is self-driven via nozzle reaction force, is ideal for both surface cleaning and removal tasks. Connection: 9/16"-18 UNF-LH.

Water-jetting system	Designation	Art. no.
30° jet angle		
1000me, 1000t	0.95	546 732



Repair kits

For shape F rotating nozzles. Specifically designed for the high water temperatures of DYNAJET water-jetting systems.

Nozzle type	Designation	Art. no.
Nozzle 528 432	1.05	528 434
Nozzle 435 110	1.10	443 326
Nozzle 546 732	0.95	546 733



RDS-Easy 3.000-3 rotating nozzle system

Ultrahigh-pressure nozzle system for up to 3,000 bar. Leak-free. Multi-jet head, self-driven via nozzle reaction force. Speed adjustment via contact-free magnetic brake. Approx. 1,000 - 4,000 rpm. Weighs only approx. 1.8 kg. Nozzle carrier head to accommodate max. 3 shape G nozzle inserts (M10). Connection: 9/16"-18 UNF-LH IT. Nozzle inserts not included.

Nozzle type	Art. no.
RDS-Easy 3.000-3	544 735
Suggestion for standard configuration:	
1000me, 1000t: 2x 0,55, 1x 0,50	2x 457 456 1x 455 458



Water-sandblasting systems and accessories

WSS 1000 water-sandblasting system

Professional sandblasting head for continuous deployment. Circular arrangement of the high-pressure nozzles. Central sand feed. Tungsten carbide focus nozzle. Connection: 9/16"-18 UNF IT. Accommodates 3 high-pressure nozzles (shape E).



	Art. no.
WSS 1000 (shape E nozzles not included)	435 111
Replacement tungsten carbide focus nozzle	450 815

Nozzle sets (shape E) for WSS 1000 water-sandblasting system

High-pressure nozzle sets for WSS 1000 sandblasting head. Each set consists of 3 nozzles.

Water-jetting system	Designation	Art. no.
800me, 800th wireless	0.6	447 560
1000me, 1000t	0.7	447 561



Special tool

	Art.-Nr.
For replacing shape E nozzles for WSS 1000	438 684



Blasting-abrasive suction pipe for WSS 1000

	Art. no.
Offering stepless quantity adjustment of the blasting medium	435 113

Blasting-abrasive suction hose for WSS 1000

	Art. no.
With spiral inlay; length: approx. 12 m	414 037
Clamp for blasting-abrasive suction hose. 2 required (1 on the blasting head and 1 on the suction pipe).	001 422



Cleaning tanks, pipes and heat exchangers

DYNAJET TWS 1000 tank-washing system

For interior cleaning of tanks, drums, barrels and containers. With a working pressure of up to 800 bar and a flow rate of 21 l/min (5.56 USgal/min). Three-dimensional cleaning via nozzle rotor with 2 high-pressure nozzles. Driven by nozzle reaction force. Speed adjustment via magnetic brake. Fully equipped with hose connection M24 x 1.5 DKO ET.



	Art. no.
TWS 1000	461 074

F 1200 foot valve

F 1200 foot valve for 800me, 800th wireless, 1000me, 1000t

Art. no.

532 110



Spare-part kit for F 1200 foot valve

489 339

Flexible lances

Hose connection inlet: M24 x 1.5 DKO IT. 10 m in length with marking before end of hose.

External diameter and connection thread	Type	Art. no.
10.5 mm; M7 ET	(4/2)	505 571
13 mm; 1/8" ET	(5/2)	505 574
16 mm; 1/4" ET	(6/2)	505 576



DYNAJET hose catcher

A safety device for manual interior cleaning of pipes and heat exchangers with flexible lances and hoses. Stops the nozzle escaping from the pipes to be cleaned. Clamp-secured. Suitable for 4/2, 5/2 and 6/2 hoses.

Art. no.

505 570



Pipe-cleaning nozzles, rigid

Drilled as pulling nozzles with front jet for 800me and 800th.

External diameter and connection thread	Type	Art. no.
10.5 mm; M7 IT	(4/2)	On request
14 mm; 1/8" IT	(5/2)	538 773
17 mm; 1/4" IT	(6/2)	538 799

**Pipe-cleaning nozzles, rotating**

Drilled as pulling nozzles for 800me and 800th.

External diameter and connection thread	Type	Art. no.
13 mm; 1/8" IT	(5/2)	538 774
16 mm; 1/4" IT	(6/2)	538 806



Floor-cleaning system and accessories

DYNAJET DFS 1200 floor-cleaning system

Floor cleaner for rapid removal tasks over large areas or to clean surfaces of all types. Removal width: approx. 260 mm. PN: 1,200 bar. Complete with four large, stable wheels.

With nozzle rotor to accommodate several shape G nozzles. Includes electronic signal and short cable with connector. Safety trigger with lock to prevent the gun from going off accidentally. Suitable for hot water. Stable, robust industrial design. Driven by nozzle reaction force through the oblique positioning of the high-pressure nozzles. Connection: M24 x 1.5 DK0 ET. Nozzle sets not included.

	Art. no.
DFS 1200 without vacuum connection (shown here)	505 584
DFS 1200 with vacuum connection	505 585



Other accessories

DYNAJET mobile filter station

The filter unit is connected via a short hose right in front of the supply connection on the high-pressure unit. Suitable for all DYNAJET water-jetting systems. 2 x 2 filter housing (9 3/4") in parallel operation. Connection: 3/4" GEKA coupling. Outlet: 3/4" GEKA coupling. 2x capped coupling. Filter inserts not included. Advantages:

- **Effective and flexible:** Long-lasting protection of the water-jetting system. Large filter area in 2 x 2 parallel operation for increased duration of deployment and minimised pressure loss. The filter unit adapts to all degrees of dirt and all machine types.
- **Superior and practical:** Corrosion-free and weight-reduced aluminium construction. Designed for difficult operating conditions. Filters can be changed very quickly. Stands securely. Space to store 4 replacement filter inserts. The stainless steel filters are washable.

[DYNAJET mobile filter station →](#)

DYNAJET filter station	Data	Art. no.
Supply pressure (max.)	8 bar at 20 °C	494 706
Temperature (max.)	50 °C at 3 bar	
Flow rate (max.)	40 l/min	
Weight	Approx. 11 kg	
Dimensions (L x W x H)	435 x 340 x 404 mm	

Filter inserts, 9 3/4" in size	Fineness	Art. no.
Depth filter	10 µm	496 557
Depth filter	50 µm	494 759
Stainless steel filter	80 µm	495 982

Accessory packages for filter station	Art. no.
Accessory package 1: 6x depth filter 10 µm, 2x stainless steel filter 80 µm and 2 m supply hose	496 575
Accessory package 2: 6x depth filter 50 µm, 2x stainless steel filter 80 µm and 2 m supply hose	496 576





Water-jetting systems and accessories up to 3,000 bar (43,500 PSI)

Accessories up to 3,000 bar

DYNAJET original accessories meet high quality standards and are perfectly attuned to numerous applications. They specifically optimise work efficiency and cleaning depth in line with their area of deployment. In addition to

accessory sets, hoses, lances, guns and nozzles, DYNAJET also offers special accessories for applications such as water-sandblasting, or cleaning floors, containers, pipes or heat exchangers.



Abbreviations used

DN: Diameter (mm)

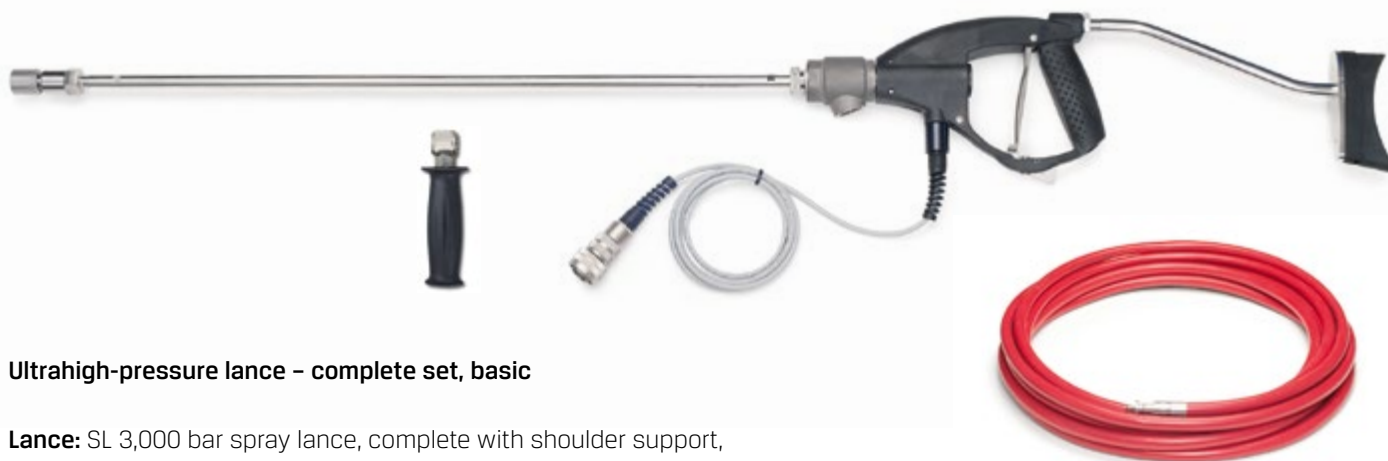
PN: Max. operating pressure (bar/PSI)

IT: Internal thread

ET: External thread

Art. no.: Article number

Accessory sets



Ultrahigh-pressure lance – complete set, basic

Lance: SL 3,000 bar spray lance, complete with shoulder support, 800 mm lance pipe, handgrip, pressure screw and pressure ring, plus anti-seize lubricant

Nozzles: Nozzle carrier incl. 2 shape G round-jet nozzles

Hose line: 20 m; DN 8; 2,800 bar incl. adapter, safety coupling and whip check

Control cable: 25 m

Art. no.

Complete set, basic

533 098

Ultrahigh-pressure lance – complete set, power

Art. no.

As "complete set, basic", plus RDS Easy 3.000-6 rotating nozzle system incl. 6 shape G round-jet nozzles

533 099



Hose lines and accessories

Ultrahigh-pressure hose lines

With sealing nipple for EC Easy Connect rapid connection system. Includes protective hose with burst- and rip-out-protection function, and whip check.

Hose lines	Art. no.
2,000 bar; DN 8; length: 20 m	526 539
2,800 bar; DN 5; length: 5 m	526 536
2,800 bar; DN 8; length: 10 m	526 537
2,800 bar; DN 8; length: 20 m	526 538
O-ring for sealing nipple	526 356
Support ring for sealing nipple	526 357



Hose connector and couplings

Hose connector and couplings	Art. no.	
EC hose connector, DN 5 and DN 8	526 352	1
Safety coupling for EC hose connector, DN 5 and DN 8 hoses	526 351	2
EC safety coupling for pump and lance connection, DN 5 and DN 8	526 353	3
EC adapter for pump outlet and lance M26 x 1.5	526 354	4
Protective cap for EC hose nipple	526 355	5
Hose whip check	547 496	6



Guns and accessories

SL 3,000 bar spray lance with sensor

Lance handle for PN 3,000 bar with electronic signal. Short cable with connector. Safety trigger with lock to prevent the gun from triggering accidentally. Connections: 2x M26 x 1.5 IT. Pressure rings and pressure screws not included.

	Art. no.
Spray lance	514 732
Replacement contact switch with short cable and metal connector	512 224



Shoulder support

Art. no.

For SL 3,000 bar high-pressure lance to absorb reaction forces. Mandatory for reaction forces greater than 150 newtons.

519 001

**High-pressure lance pipes, pressure ring and pressure screw**

For fixing straight on to the spray lance. External diameter: 14.3 mm. Spanner flat on both ends: 12 mm. Internal diameter: 5 mm. Connection thread on both ends: 9/16"-UNF-LH ET. PN: 3,200 bar (46,400 PSI).



Lance pipes

Art. no.

Length: 350 mm	482 518
Length: 800 mm	482 519
Length: 1,200 mm	482 520
Length: 2,000 mm	482 521

Pressure ring and pressure screw

Pressure ring for screwing together ultrahigh-pressure connections. Anti-vibration. Thread: 9/16"-18 UNF-LH IT.	474 636
Pressure screw for screwing together ultrahigh-pressure connections. Anti-vibration in combination with pressure ring. Thread: M26 x 1.5 ET.	474 635



For safety reasons, a spray lance measuring 800 mm or more must always be chosen so that, in combination with the SL 3,000 bar (43,500 PSI) spray lance, an overall length of at least 800 mm is reached.

Handgrip

Art. no.

For side-mounting on the high-pressure gun-lance. Can be secured in any position.

519 707

**Control cable**

For accessories with remote control via electronic signal. Metal coupling and connector.

Art. no.

25 m; loose, with coupling and connector	511 694
50 m; loose, with coupling and connector	511 696
25 m; on drum, with coupling, locking mechanism and connector	514 733
50 m; on drum, with coupling, locking mechanism and connector	514 734



High-pressure nozzles

i The nozzle inserts for high-pressure nozzle systems are listed as examples only. For our complete selection, please visit:
 → www.dyna-jet.com/nozzles

Single-nozzle carrier for shape G nozzle inserts

Art. no.

Extremely light in weight to accommodate one shape G nozzle insert. M10 internal thread. PN: 2,800 bar. Connection: 9/16"-18 UNF-LH IT.	482 783
---	---------



Nozzle insert (shape G)

Round-jet nozzle with M10 external thread and hexagon socket. Nozzle insert with stainless steel intake cone, vacuum-hardened, sealing the nozzle insert via a fixed 59° bronze tube cone sealing system. Deployment up to 3,000 bar.

	Diameter	Art. no.
UHP 220, 2,800 bar/ 20 l/min	0.75	457 460



RDS-Easy 3.000-3 rotating nozzle system

Ultrahigh-pressure nozzle system for up to 3,000 bar. Leak-free. Multi-jet head, self-driven via nozzle reaction force. Speed adjustment via contact-free magnetic brake. Approx. 1,000 - 4,000 rpm. Weighs only approx. 1.8 kg. Nozzle carrier head to accommodate max. 3 shape G nozzle inserts (M10). Connection: 9/16"-18 UNF-LH IT. Nozzle inserts not included.

	Art. no.
RDS-Easy 3.000-3	544 735
Suggestion for standard configuration:	
UHP 220, 2,800 bar/20 l/min: 3x shape G nozzle insert, diameter: 0.45 mm	3x 457 455



RDS-Easy 3.000-6 rotating nozzle system

Ultrahigh-pressure nozzle system as RDS-Easy 3.000-3, with nozzle carrier head to accommodate max. 6 shape G nozzle inserts (M10).

	Art. no.
RDS-Easy 3.000-6	544 736
Suggestion for standard configuration:	
UHP 220, 2,800 bar/20 l/min: 6x shape G nozzle insert, diameter: 4x 0.30 mm and 2x 0.35 mm	4x 457 454 2x 455 457



Rotating nozzle, turbo, for up to 2,500 bar (36,250 PSI)

This all-purpose nozzle with an extremely hard spot-jet that is self-driven via nozzle reaction force, is ideal for both surface cleaning and removal tasks. Connection: 9/16"-18 UNF-LH IT.

Water-jetting system	Designation	Art. no.
UHP 220, 2,500 bar, 23.5 l/min	0.75	497 299
Repair kit for rotating nozzle (art. no. 497 304)	0.75	497 308



Pipe and heat exchanger cleaning

Electric foot switch

Complete with signal generator for remote control, with short cable and connector. Up to 3,000 bar.

	Art. no.
Foot switch	514 756
Replacement contact switch (sensor) with short cable and metal connector	512 224



Flexible lances

Hose connection inlet: 9/16" UNF-LH IT. 10 m in length with marking before end of hose.

External diameter and connection thread	DN	Art. no.
16 mm, 3/8"-24 LH	4	On request
19 mm, 3/8"-24 LH	5	On request
23 mm, 9/16" UNF-LH	8	On request



Water-jetting systems and accessories up to 3,000 bar (43,500 PSI)

DYNAJET hose catcher

A safety device for manual interior cleaning of pipes and heat exchangers with flexible lances and hoses. Stops the nozzle escaping from the pipes to be cleaned. Clamp-secured. Suitable for 4/2, 5/2 and 6/2 hoses.

Art. no.

505 570



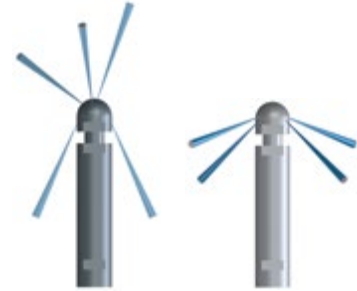
Pipe-cleaning nozzles, rotating, 2,800 bar

External diameter and connection thread

Pipe diameter

Art. no.

13 mm, 3/8"-24 LH	15-25 mm	On request
18 mm, 3/8"-24 LH	22-33 mm	On request
27 mm, 9/16"-18 LH	32-51 mm	On request



Floor-cleaning system and accessories

DYNAJET DFS 2800 floor-cleaning system

Floor cleaner for rapid removal tasks over large areas or to clean surfaces of all types. Removal width: approx. 260 mm. PN: 2,800 bar. Complete with four large, stable wheels.

With nozzle rotor to accommodate several shape G nozzles. Sensor for remote control. Connector socket for remote control cable. Suitable for hot water. Stable, robust industrial design. Driven by nozzle reaction force through the oblique positioning of the high-pressure nozzles. Connection: 9/16"-18 UNF-LH. Nozzle sets not included.

Art. no.

DFS 2800 without vacuum connection (shown here)	528 551
DFS 2800 with vacuum connection	528 591
Suggestion for standard configuration:	
UHP 220, 2,800 bar/27 l/min. Shape G nozzle insert, 2x 0.35 mm and 4x 0.40 mm	2x 455 457 4x 454 982



Other accessories

DYNAJET mobile filter station

The filter unit is connected via a short hose right in front of the supply connection of the high-pressure unit. Suitable for all DYNAJET water-jetting systems. 2 x 2 filter housing (9 3/4") in parallel operation. Connection: 3/4" GEKA coupling. Outlet: 3/4" GEKA coupling. 2x capped coupling. Filter inserts not included.

Advantages:

- **Effective and flexible:** Long-lasting protection of the water-jetting system. Large filter surface in 2 x 2 parallel operation for increased duration of deployment and minimised pressure loss. The filter unit adapts to all degrees of dirt and all machine types.
- **Superior and practical:** Corrosion-free and weight-reduced aluminium construction. Designed for difficult operating conditions. Filters can be changed very quickly. Stands securely. Space to store 4 replacement filter inserts. The stainless steel filters are washable.

DYNAJET filter station	Data	Art. no.
Supply pressure (max.)	8 bar at 20 °C	494 706
Temperature (max.)	50 °C at 3 bar	
Flow rate (max.)	40 l/ min	
Weight	Approx. 11 kg	
Dimensions (L x W x H)	435 x 340 x 404 mm	

Filter inserts, 9 3/4" in size	Fineness	Art. no.
Depth filter	10 µm	496 557
Depth filter	50 µm	494 759
Stainless steel filter	80 µm	495 982

Accessory packages for filter station	Art. no.
Accessory package 1: 6x depth filter 10 µm, 2x stainless steel filter 80 µm and 2 m supply hose	496 575
Accessory package 2: 6x depth filter 50 µm, 2x stainless steel filter 80 µm and 2 m supply hose	496 576





DYNAJET

DYNAJET personal protective equipment

Wearing perfect-quality, protective water-jetting clothing in flawless condition is essential and also prescribed by law.

DYNAJET offers a complete, high-quality assortment of the personal protective equipment required.



Size specifications

Order size	Height	Chest circumference
S (small)	158 – 170 cm	80 – 92 cm
M (medium)	170 – 182 cm	92 – 104 cm
L (large)	182 – 188 cm	104 – 116 cm
XL (extra large)	188 – 194 cm	116 – 124 cm
XXL (extra extra large)	194 – 200 cm	124 – 132 cm

Standard personal protective equipment

"Speedy" safety glasses

Art. no.

Scratch-proof, transparent polycarbonate shields. Length-adjustable arms.

414 094



Gloves

Lined, waterproof, breathable and heat-resistant.

Size

Art. no.

8	414 086
9	414 087
10	414 088
11	414 089



Personal protective equipment

Overalls

As protection against dirt and water. 100 % waterproof, with hood and collar.
The overalls do not protect against high pressure.

Size	Art. no.
L	426 895
XL	426 896



Overalls

Protective suit

As protection against dirt and water. 100 % waterproof. Two-piece:
jacket + dungarees. The suit does not protect against high pressure.

Size	Art. no.
M	414 067
L	414 068
XL	414 069
XXL	414 070



Protective suit

Safety boots for up to 800 bar²

For use when working with hand-guided water-jetting systems. Pressure-proof up to 800 bar at a lance reaction force of up to 117 newtons, with a nozzle size of up to 1.0 mm and a distance of up to 75 mm from the nozzle to the boot, at a feed rate of up to 0.2 m/sec and a water flow of up to 17.7 l/min.

Size	Art. no.
42	460 736
43	460 737
44	460 738
45	460 739
46	460 740
47	546 877



Safety helmet and accessories

	Art. no.
Safety helmet incl. hearing protectors and movable, anti-fog visor (polycarbonate). Design in accordance with CE, EN 397: 1195, EN 352-3.	427 305
Additional visor made of stainless steel	546 664
Replacement visor	546 665
Replacement hearing protectors	546 666



1 Protective clothing approved in accordance with directive 89/686/EEC and German BGR 191

2 Certified in accordance with test specification EN 345-1 – June 1997, German BGR 191, section 3.1.5.5.3 by centre no. 0299

Ultrahigh-pressure personal protective equipment

Dungarees¹

100 % waterproof. Up to 2,000 bar spot-jet, 3,000 bar rotor nozzle.

	Art. no.
S, M	460 747
L, XL	460 300
XXL	460 748



Dungarees

High-pressure apron

High-pressure apron¹

	Art. no.
Up to 500 bar rotor/flat-jet nozzle, 200 bar spot-jet nozzle. Weight: 1.5 kg.	546 668
Up to 2,000 bar spot-jet, 3,000 bar rotor nozzle. Weight: 1.7 kg.	476 881

Protective vest¹

100 % waterproof. Up to 2,000 bar spot-jet, 3,000 bar rotor nozzle.

	Art. no.
Size: M-XXL	460 302



Protective overboots¹

With clips to fasten them securely over the ordinary safety boots.

	Art. no.
Up to 1,000 bar spot-jet, 2,800 bar rotor nozzle.	460 757
Up to 2,000 bar spot-jet, 3,000 bar rotor nozzle.	460 306



Safety boots for up to 3,000 bar²

Size	Art. no.
42	499 649
43	499 650
44	499 651
45	499 652
46	499 653
47	499 654
48	499 655



По вопросам продаж и поддержки обращайтесь:

Архангельск (8182)63-90-72	Астана +7(7172)727-132	Белгород (4722)40-23-64
Брянск (4832)59-03-52	Владивосток (423)249-28-31	Волгоград (844)278-03-48
Вологда (8172)26-41-59	Воронеж (473)204-51-73	Екатеринбург (343)384-55-89
Иваново (4932)77-34-06	Ижевск (3412)26-03-58	Казань (843)206-01-48
Калининград (4012)72-03-81	Калуга (4842)92-23-67	Кемерово (3842)65-04-62
Киров (8332)68-02-04	Краснодар (861)203-40-90	Красноярск (391)204-63-61
Курск (4712)77-13-04	Липецк (4742)52-20-81	Магнитогорск (3519)55-03-13
Москва (495)268-04-70	Мурманск (8152)59-64-93	Набережные Челны (8552)20-53-41
Нижний Новгород (831)429-08-12	Новокузнецк (3843)20-46-81	Новосибирск (383)227-86-73
Орел (4862)44-53-42	Оренбург (3532)37-68-04	Пенза (8412)22-31-16
Пермь (342)205-81-47	Ростов-на-Дону (863)308-18-15	Рязань (4912)46-61-64
Самара (846)206-03-16	Санкт-Петербург (812)309-46-40	Саратов (845)249-38-78
Смоленск (4812)29-41-54	Сочи (862)225-72-31	Ставрополь (8652)20-65-13
Тверь (4822)63-31-35	Томск (3822)98-41-53	Тула (4872)74-02-29
Тюмень (3452)66-21-18	Ульяновск (8422)24-23-59	Уфа (347)229-48-12
Челябинск (351)202-03-61	Череповец (8202)49-02-64	Ярославль (4852)69-52-93

Эл. почта: dtn@nt-rt.ru | | Сайт: <http://dynajet.nt-rt.ru>